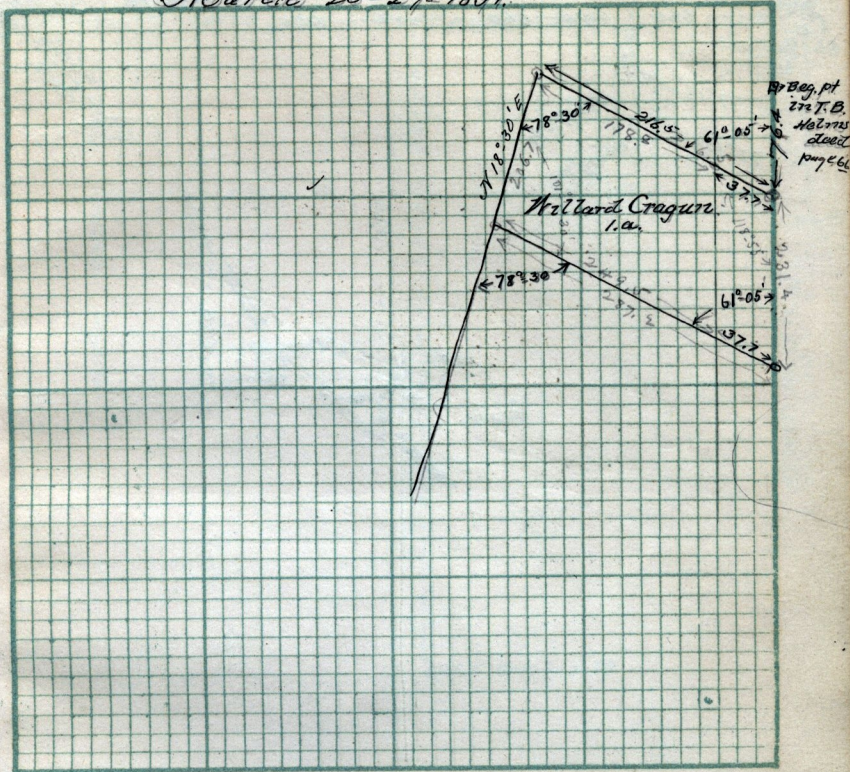


March 26-27-1891.



Scale:

Chains per inch.

April 4th 1891.

I-121. T. Reed & Wife to John R. Pool, Pt N. W 1/4 Sec 30 T-6-N-R-1-W, Beg. S. W. cor. N 40. ch E. A. 53 ch S 33.2 ch W 1.80 ch S. 70.45 ch N to beg. 2.48 ch, 17.21 ch, 14 Perches,

I-323. T. Reed to James Clark, Pt N. W 1/4 Sec 30 T-6-N-R-1-W, Beg. N. 57 ch E. of N. W. cor. S 11.52 ch S 84° 15' E 20.65 ch N 22° 36' E 4.21 ch N 57° 52' W 17.80 ch N 4. ch to beg. 16. 24. 24. 16. perches

J-232. T. Reed to T. Doxey. Beg. 14.98 ch N. of S. E. cor. W 5.36 ch N 6° 30' E 19.00 ch N 27° 51' E 1.31 ch S 74° 17' E 2.60 ch S 19.93 ch to beg. 8 1/4 a

J-504 - T. Reed to Samuel Purdy, Pt N. W 1/4 Sec 30. Beg. 5.33 ch W. of S. E. cor. W 1.00 ch N 35° N. 5.18 ch N. 9.12 ch S 66° 47' E 4.35 ch